

We're excited to be sailing in seas that flow along the most interesting **GEOGRAPHY** in the world. Just as the ocean tells us stories, so do the mountains, coves, and islands of the **ATLANTIC "CUP" COAST**. As we explore water and land and how they **INTERACT**, we gain respect for the world around us. As we learn about the **HISTORY** of the land, we gain respect for those who explored before us. You'll find lots of information in the expedition overview on the website. **HINT**: Read the story, then read the questions. When you go back to the story, you will recognize the answers to the questions! When we know the **PAST**, we have a better idea what to expect in the **FUTURE**.

The Bodacious Dream crew needs your help to understand the lands we will sail past. Come onboard!



MAPS ARE FUN!



Get out your pencil (or pen, if you are confident)! Answer the questions and then mark the locations on the map.

- 1 The race starts in Charleston.
Which state is Charleston in?
- 2 We finish the first leg in New York City.
Which state is that city in?
Can you name the nearby barrier island?
- 3 How many states are between these two?
Can you name them?
- 4 When the race finishes in Newport, what state will we be in? Why is this state unique in the United States?
- 5 Where was America's first permanent English colony?
Do you know what year it was founded?
HINT: It was 13 years before the Pilgrims landed.
- 6 Where is the Graveyard of the Atlantic?
Why do they call it that?
Where does the Gulf Stream flow?
- 7 Which way is north on the map?
Which way is east?

Cape Hatteras Lighthouse



Lighthouses are important tools for sailors. We rely on them to show us where dangerous waters or hazards are. The lighthouse at Cape Hatteras is one of the most famous ones. It marks the 12-mile long sandbar called Diamond Shoals that lies just off the eastern coast of the United States.

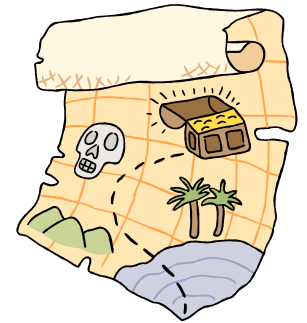
During the Civil War, the lighthouse served as a lookout post for the Confederate Army. When the Confederates were driven back, they removed the lighting system so the Union soldiers would not be able to use the lighthouse.

Q: Which two great ocean currents meet at Cape Hatteras? What geographic feature does that create?

Q: Cape Hatteras is America's tallest lighthouse. How tall is it? How far does its light shine?

There were some famous **PIRATES** who sailed up and down this coast. Can you name the most well-known pirate? **HINT:** He was known for his beard.

Do you think pirates buried their treasures near where we are going? Where would you look for buried treasures?



One of the most memorable times in the Atlantic Cup race is when we sail into New York Harbor and see the Statue of Liberty. What a thrill!

How many people live in the Metropolitan area of New York City?

TRUE or **FALSE**? New York City is the largest city in the United States.

Do you have any idea how many languages are spoken by the many people living in New York?